

National Sales Hotline | 400-660-3888

National Service Hotline | 400-012-9968

Make the service visible



Please stay tuned
to HUACA Elevator

GUANGDONG HUACA ELEVATOR CO., LTD

Address: No. 15 Ecological Road, Danzao National Ecological Industrial Park,
Nanhai District, Foshan City, Guangdong Province

Sales Hotline: 400-660-3888

Email: huaca@fshukai.com

URL: www.fshukai.com

This book is a general information publication, and we reserve the right to modify product designs and instructions at any time.
We bear no liability for any words or phrases in this book, whether literal or implied, regarding any product, its usage and quality,
or the expression or alteration of terms in purchase and sale contracts.

HUACA

VILLA ELEVATOR

HUACA

Experience extraordinary quality

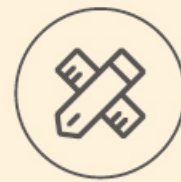
The exquisite craftsmanship of every detail embodies the beauty of space that can withstand the scrutiny of time. Wandering in the flow of love amidst time, create a beautiful home life.



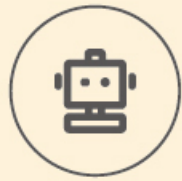
International supply chain



VIP-style services



Diversified customization options



Intelligent experience



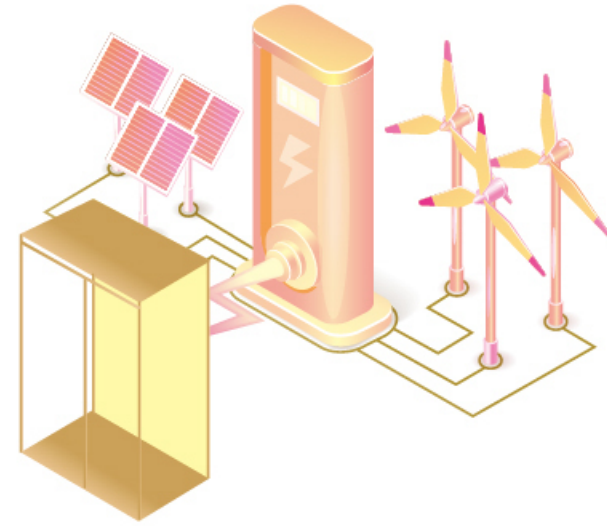
Personalized design



exclusive home new life



New energy Villa elevator



Mains electricity

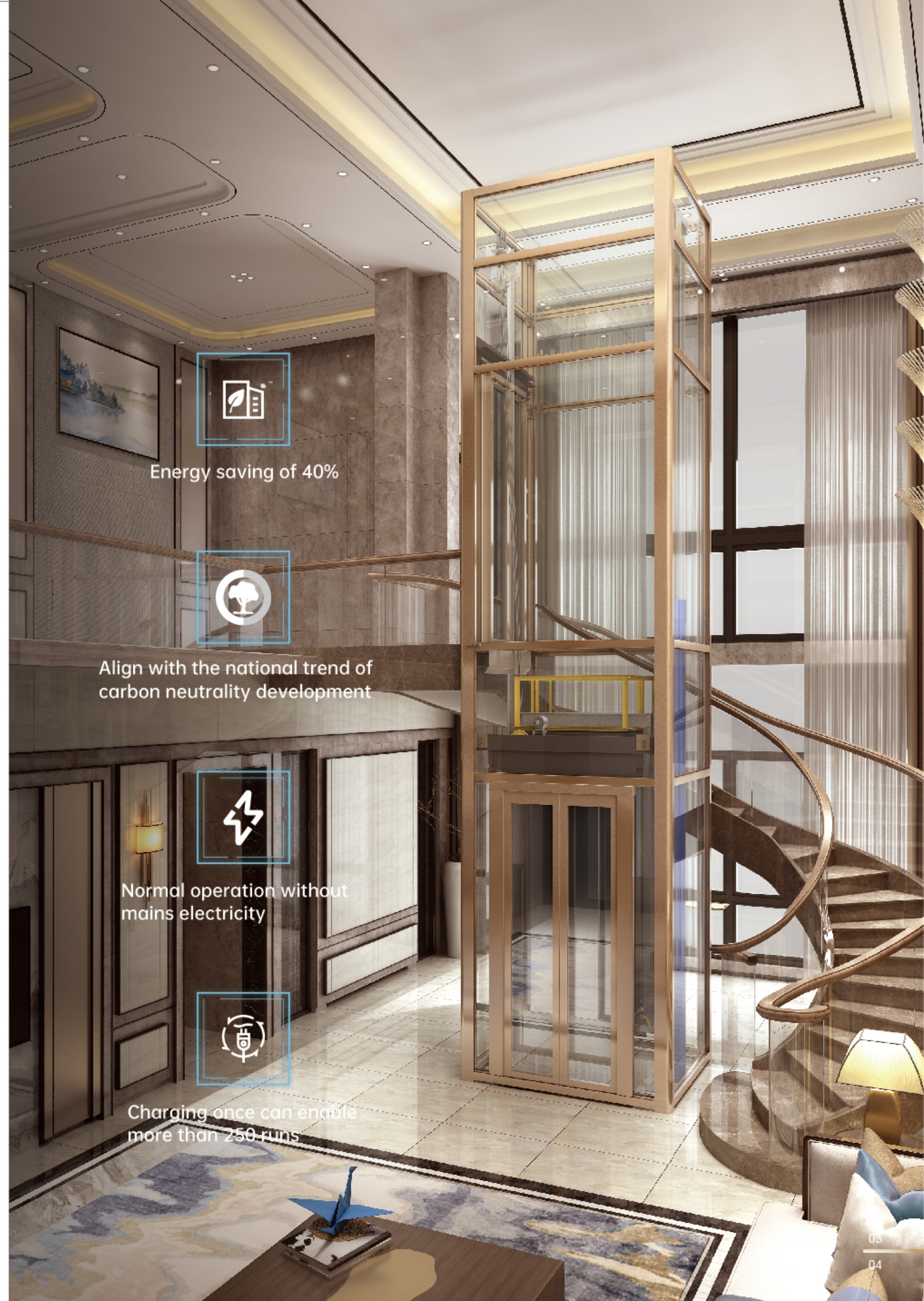
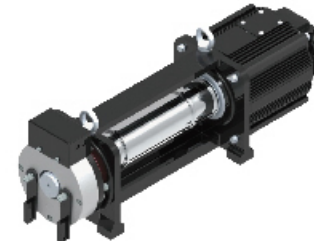


Photovoltaic



Wind power

It supports and matches with multiple energy-saving modes



Energy saving of 40%



Align with the national trend of carbon neutrality development



Normal operation without mains electricity



Charging once can enable more than 250 runs

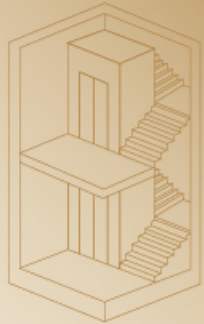
Multiple installation modes

1



Reserved hoistway for buildings

2



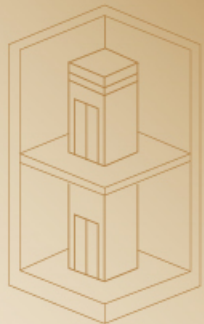
Circumferential stair type

3



Hollow hall type

4



Indoor stair opening

5



Exterior home decoration type



Sliding door series

- Meets the minimal requirements for well installation
- Maximize the width of the door opening
- Maximize the utilization rate of the shaft
- Short installation cycle, low noise, and no pollution
- Low maintenance cost



Center-opening two-leaf automatic door

- Suitable for situations where the shaft width is sufficient
- Provides a larger car area
- Fully utilizing the well space



Side-opening two-leaf automatic door

- Suitable for limited well size
- Configuration of automatic doors
- Maximize the opening size of automatic doors

Platform villa elevator

Flexible and versatile platform home elevators are available in white, transparent large glass swing doors with decorative mirrors equipped with LED light strips, transparent large glass automatic double doors, sightseeing glass shafts, and over 200 RAL elevator colors, making them ideal for installation in high-end villas, high-rise duplex apartments, and other residential settings.

Convenient installation at anywhere

Being compact and flexible, these elevators can easily integrate into any building, offering a range of accessories to create a private, top-tier elevator tailored for home environments, ensuring exceptional safety and ease of installation. In cases of extremely low ceiling heights, a half-height door of 1.1 meters can be provided to maximize the use of the top floor space.

Low cost in use and maintenance

Compared to traditional elevators, our installation and maintenance costs are lower. In addition to the standard steel plate shafts and doors, we also offer safety and explosion-proof laminated glass shafts and a variety of doors for your choice.

Minimum size

Minimum size: 900 * 900mm
Overhead: 2500mm
Pit: 150mm

Porcelain hyun white (Standard)

Platform elevator decoration series

Colorful background wall styles

Carefully selected fashionable background walls, enhanced with light and shadow effects, combine aesthetics and adaptability.



Blooming Flowers & Full Moon



Beautiful Rivers & Mountains



A Profusion of Colour



Glistening Lights

Color of shaft and hall door



Frosted white

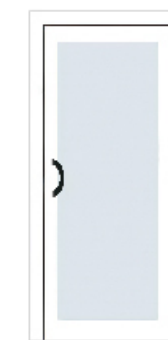
Rose gold

Champagne gold

Frosted black

Chinese red

Manual door / swing door



HK-MS01(Optional)

Steel plate baked paint



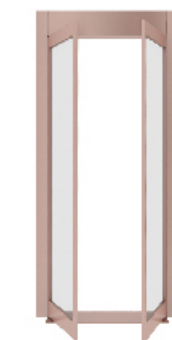
HK-MS02(Optional)

Titanium gold stainless steel



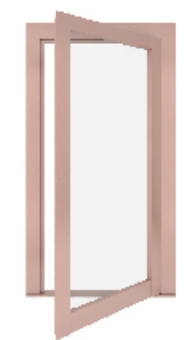
HK-MS03(Optional)

Rose gold stainless steel



HK-MS04(Optional)

Rose gold stainless steel



HK-MS05(Optional)

Rose gold stainless steel

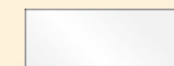


Aluminum alloy well frame

Advantages of aluminum alloy frameworks

1. We use industrial aluminum alloy, featuring a compact frame structure that saves shaft area.
2. The aluminum alloy interface is designed with a high floor height, and the hidden section interface is processed. There are no connecting parts or bolts on the inner side, and the frame is seamless and aesthetically pleasing.
3. Paired with aluminum alloy door panels of the same color scheme, the overall color is seamless and harmonious.

Advanced spraying aluminum alloy frame



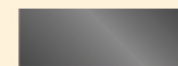
White



Champagne gold



Titanium gold



Feili grey



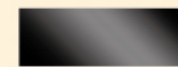
Rose gold



Bronze

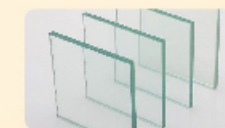


Brown tea



Obsidian black

Optional seal material



Colorless glass



Frosted glass



Brown glass



Optional colors



HK-V01-3

Hairline mirror



HK-V01-4

Rose gold



Scan the QR CodeView
the 720° panoramic view
of the elevator car

Standard configuration



HK-V01-1 (Black titanium)

Ceiling: Mirror stainless steel, acrylic transparent panel,
LED light (HK-20-D01)

Hall door: Hairline stainless steel

Front wall: Hairline stainless steel

Car door: Hairline stainless steel

Operating box: HK-COP173 Integrated hairline stainless steel

Call-out: HK-HOP171

Sidewall: Hairline stainless steel, black titanium mirror stainless steel

Rear wall: Hairline stainless steel, Black titanium mirror

etched stainless steel

Floor: Marble (HK-DB01)



HK-V01-2 (Champagne gold)

Ceiling: Mirror stainless steel, acrylic transparent panel,
LED light (HK-20-D01)

Hall door: Hairline stainless steel

Front wall: Mirror stainless steel

Car door: Hairline stainless steel

Operating box: HK-COP173 Integrated mirror stainless steel

Call-out: HK-HOP171

Sidewall: Champagne gold hairline stainless steel (Color optional),

Champagne gold mirror stainless steel (Color optional)

Rear wall: Champagne gold hairline stainless steel (Color optional)

Champagne gold mirror etched stainless steel (Color optional)

Floor: Marble (HK-DB01)



Standard configuration

HK-V03

- Ceiling: Mirror stainless steel, acrylic transparent panel
- LED Light (HK-20-D01)
- Hall door: Hairline stainless steel
- Front wall: Hairline stainless steel
- Car door: Hairline stainless steel
- Operating box: HK-COP173 Integrated hairline stainless steel
- Call-out: HK-HOP171
- Sidewall: Hairline stainless steel, mirror stainless steel
- Rear wall: Hairline stainless steel, mirror etched stainless steel
- Floor: Marble (HK-DB01)



Scan the QR CodeView
the 720 ° panoramic view
of the elevator car



Note: There may be slight discrepancies between the sample photos and the actual product. Everything shall be subject to the actual product

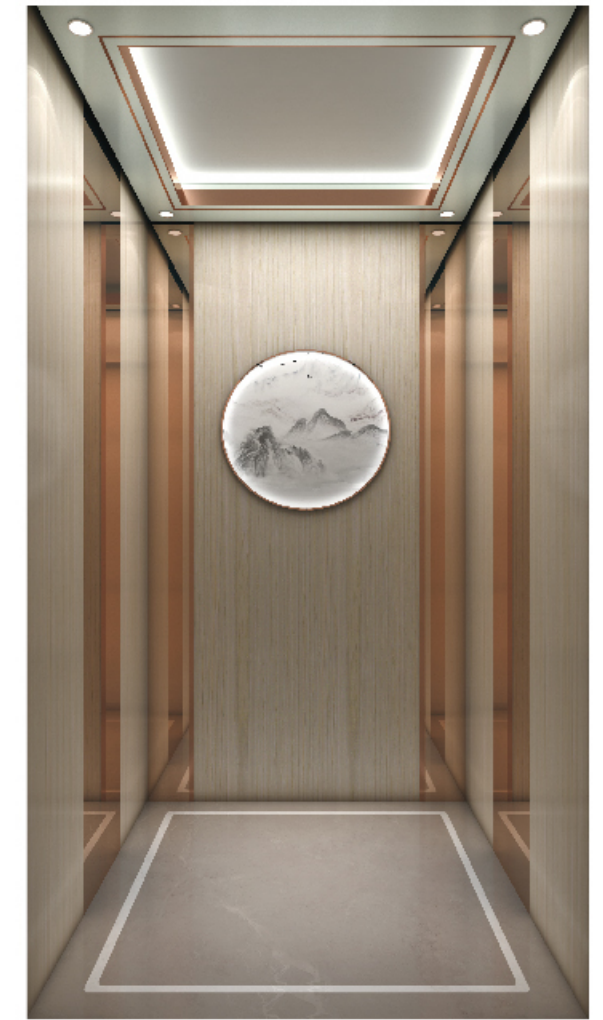
Chinese style



HK-V04(Optional)



Ceiling: Steel plate baked paint, black titanium gold trim strip, back light belt LED灯 (HK-D02)
 Car door: Black titanium mirror etched stainless steel (HK-M02)
 Hall door: Hairline stainless steel
 Car wall: Black titanium mirror stainless steel, wood eco-panel, ink decorative painting
 Floor: Marble (HK-DB02)



HK-V05(Optional)



Ceiling: Rice white metal paint inlaid with metal decorative strips, LED strip LED light (HK-D03)
 Car door: Rose gold mirror etched stainless steel (HK-M03)
 Hall door: Hairline stainless steel
 Car wall: Rose gold mirror stainless steel, wood veneer, decorative painting
 Floor: Marble (HK-DB03)



Note: There may be slight discrepancies between the sample photos and the actual product. Everything shall be subject to the actual product

Modern simplicity



HK-V06(Optional)



Ceiling: Mirror stainless steel, acrylic transparent panel, LED light (HK-D06)
 Car door: Bronze mirror etched stainless steel (HK-M06)
 Hall door: Hairline stainless steel
 Car wall: Hairline stainless steel, Bronze mirror stainless steel, etching
 Floor: Marble (HK-DB06)



HK-V07(Optional)



Ceiling: White wood finish, linear light, LED light (HK-D07)
 Car door: Mirror stainless steel (HK-M07)
 Hall door: Hairline stainless steel
 Car wall: Tech wood finish, aluminum profile cladding, mirror stainless steel
 Floor: Marble (HK-DB07)



Note: There may be slight discrepancies between the sample photos and the actual product. Everything shall be subject to the actual product

European style wind



HK-V08(Optional)



Ceiling: Rose gold hairline stainless steel, acrylic transparent panel, LED light (HK-D10)
 Car door: Rose gold mirror etched stainless steel (HK-M10)
 Hall door: Hairline stainless steel
 Car wall: Rose gold hairline stainless steel, Rose gold mirror stainless steel, etching
 Floor: Marble (HK-DB10)



HK-V09(Optional)



Ceiling: Champagne gold mirror stainless steel, Acrylic lighting LED light (HK-D11)
 Car door: Champagne gold mirror etched stainless steel (HK-M11)
 Hall door: Hairline stainless steel
 Car wall: Champagne gold sandblasted stainless steel, Champagne gold mirror stainless steel, etching
 Floor: Marble (HK-DB11)



Note: There may be slight discrepancies between the sample photos and the actual product. Everything shall be subject to the actual product

Sightseeing elevator



HK-V10(Optional)



Ceiling: Mirror stainless steel frame, Acrylic lighting (HK-D14)
 Car door: Hairline stainless steel
 Hall door: Hairline stainless steel
 Car wall: Hairline stainless steel, transparent glass
 Floor: Marble (HK-DB14)



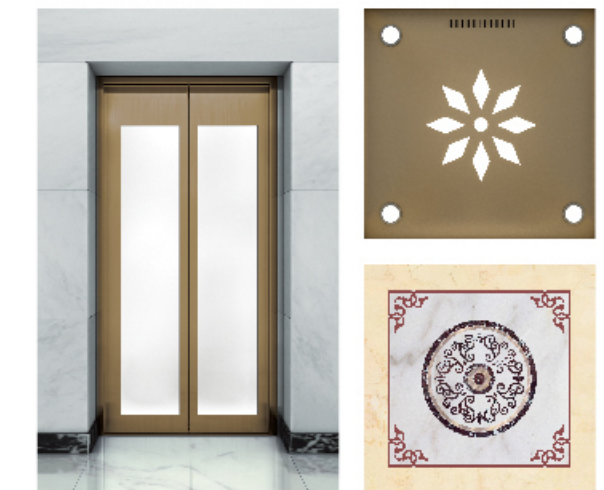
HK-V11(Optional)



Ceiling: Light bronze mirror stainless steel, Acrylic lighting LED light (HK-D15)
 Car door: Hairline stainless steel
 Hall door: Hairline stainless steel
 Car wall: Light bronze hairline stainless steel, frosted glass, sight glass
 Floor: Marble (HK-DB15)



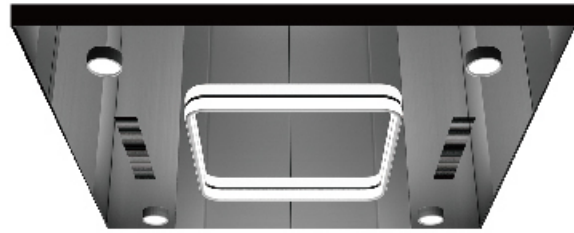
HK-M14



HK-M15

Note: There may be slight discrepancies between the sample photos and the actual product. Everything shall be subject to the actual product

Ceiling series



HK-20-D01 (Standard)

Mirror stainless steel,
Acrylic lighting, LED light



HK-D18 (Optional)

Mirror stainless steel, acrylic
transparent panel, LED downlight



HK-D19 (Optional)

Mirror stainless steel, LED downlight



HK-D2207 (Optional)

Hairline stainless steel,
acrylic transparent panel



HK-D20 (Optional)

Steel sandblasting, metal decorative strip,
hidden light strip, LED light



HK-D21 (Optional)

Rose gold stainless steel,
star top modeling

Note: There may be slight discrepancies between the sample photos and the actual product. Everything shall be subject to the actual product

Handrail series



HK-F301F (Optional)
Hairline stainless steel



HK-F308TM (Optional)
Titanium + solid wood

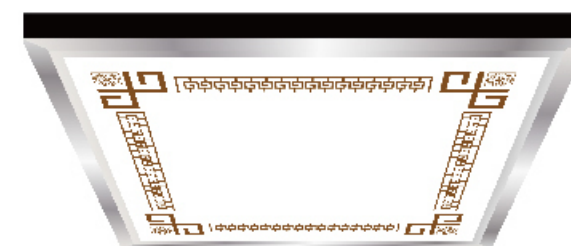


HK-F313TF (Optional)
Titanium gold stainless steel
flat handrail



HK-F308 (Optional)
Titanium + stainless steel

Plate lamp series



HK-PL008 (Standard)

Stainless steel frame,
acrylic transparent panel



HK-PL007 (Standard)

Stainless steel frame,
acrylic transparent panel

Note: There may be slight discrepancies between the sample photos and the actual product. Everything shall be subject to the actual product

Human-machine interface



Control box



HK-COP173
(Standard) Color optional

Display



HK-DIS701
(Standard 7-inch)



HK-DIS702
(Optional 7-inch)



HK-DIS703
(Optional 7-inch)

Button



HK-BUT2602
(Standard)



HK-BUT2805
(Optional)



HK-BUT053
(Optional)



HK-BUT792
(Optional)

Outbound call box



HK-HOP171
(Standard)



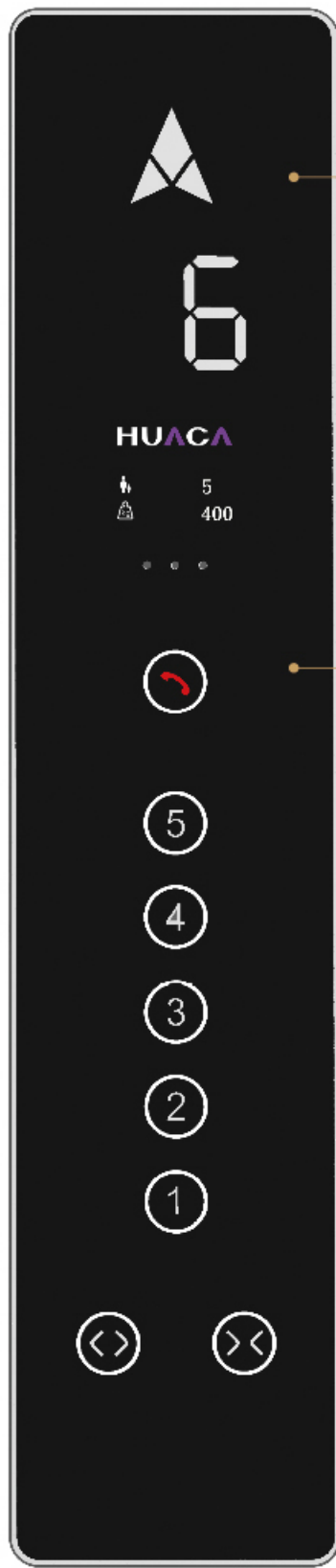
HK-DIS305
(Standard 4.3-inch)



HK-BUT2602
(Standard)

Note: There may be slight discrepancies between the sample photos and the actual product. Everything shall be subject to the actual product

Control box



HK-COP177
(Optional)

Display



HK-DIS601
(Standard 6.4-inch)



HK-DIS701
(Optional 7-inch)

Button



Integrated
touch button
(Standard)



HK-BUT053
(Optional)

Outbound call box



HK-HOP177
(Optional)



HK-DIS305
(Standard 4.3-inch)



HK-DIS301
(Optional 4.3-inch)



Integrated
touch button
(Standard)



HK-BUT053
(Optional)



Control box



HK-COP181A (Optional 13-inch)



HK-COP181B (Optional 13-inch)

Note: There may be slight discrepancies between the sample photos and the actual product. Everything shall be subject to the actual product

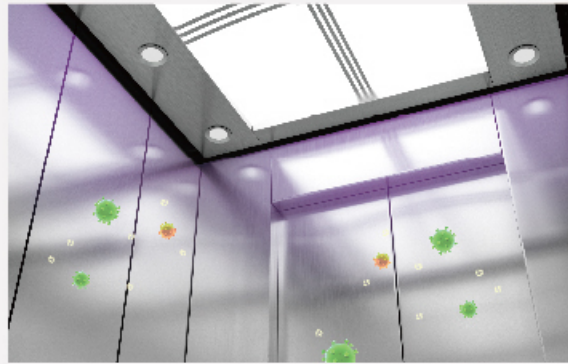
Note: There may be slight discrepancies between the sample photos and the actual product. Everything shall be subject to the actual product

HUACA cloud system optional function

Intellectual sterilizing

The elevator car is equipped with disinfection and sterilization equipment, which can achieve the following:

1. Purify the air inside the elevator car (prevent and control novel coronavirus pneumonia, remove formaldehyde);
2. Disinfect the surfaces of objects inside the elevator car;
3. Perform regular and quantitative disinfection and sterilization;
4. The disinfection and sterilization substances are harmless to the human body (the Aijiadun Oxygenase Disinfectant Tablets used have been approved by the Shanghai Center for Disease Control and Prevention, achieving a virus and bacteria killing efficiency of 99.977% within 30 seconds).



Fall-down recognition pre-alarm

When a user in the elevator falls into the car due to physical discomfort (illness, drunkenness, injury) and is unable to actively give instructions to the elevator, the elevator's intelligent system will recognize the situation and issue a warning to the property management unit. The elevator will automatically return to the base station, open the door, and wait for rescue.



Intellectual fire-fighting function

The elevator car is equipped with intelligent fire extinguishing equipment. When the sensor identifies the fire source, it can actively spray fire extinguishing materials to extinguish the fire: the fire extinguishing materials are liquid and do not harm the human body or the elevator components.



Function table

Safety function

| Rescue and trouble monitor | |
|--|---|
| Host over-heat protection | B |
| Safety loop sectional detection | B |
| Accumulated running hours | B |
| Car position switch | B |
| Car emergency-stop switch — car-top | B |
| Car emergency-stop switch — pit | B |
| Safety tongs safety contactor | B |
| Speed limiter safety contactor | B |
| Main elevator switch — inside control cabinet | B |
| No-opening switch | B |
| Speed limiter tensioning safety contactor | B |
| Car door contactor | B |
| Main fuse of car lighting main switch box — inside control cabinet | B |
| Pit supporting rod contactor | B |
| Car-top supporting rod contactor | B |
| Manual brake-releasing function | B |
| Emergency car lighting | B |
| Manual emergency rescue | B |
| Automatic rescner device | B |
| Emergency telephone (one-key dial telephone) | B |
| Automatic sending function of rescue information (GSM function) | Ⓞ |

Control function

| Prior and special service function | |
|---|---|
| No outer calling | B |
| Automatic door | B |
| Door opening / closing time at each floor can be unanimously adjusted | B |
| Inspection operation | B |
| Emergency recall | B |
| Testing operation | B |
| If elevator door does not open, it automatically goes to next landing | B |
| Long-distance monitor | Ⓞ |

Information function

| Car information display | |
|--|---|
| Inner calling log-in display lamp | B |
| Overload functional design and buzze | B |
| Car position indicationr | B |
| Running direction indication | B |
| Hall information display | |
| Outer calling log-in display lamp | B |
| Directional arrow, landing display at each floor | B |
| Monitor information | |
| Door zone indication lamp | B |
| Accumulated running times | B |
| Common trouble signal | B |

Passengers comfortable function

| Car entry / exit | |
|---|---|
| Door-opening button | B |
| Door-closing button | B |
| Light curtain | B |
| Abuse / error-use protection | |
| Secondary button-pressing cancelling of error inner-calling | B |
| Monitor of sticky button-pressing | B |
| Reversal inner-calling | B |
| Operational comfort-ness | |
| Car lighting | B |
| Car lighting | B |
| Car lighting monitor | B |
| Background music / voice arrival | Ⓞ |

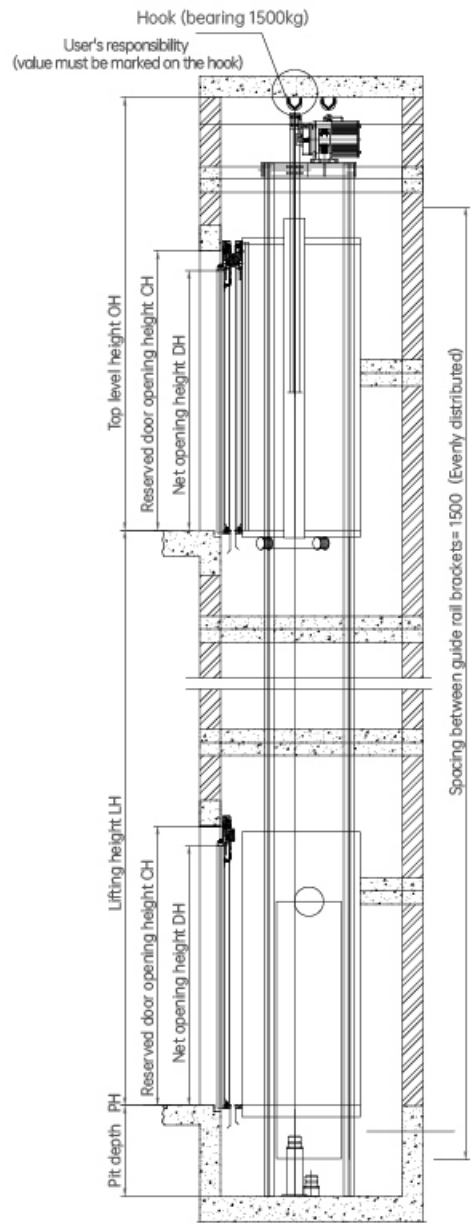
Special function

| | |
|--|---|
| Use functions for disabled (buttons for the blind, voice prompt) | Ⓞ |
| Outer calling re-opening | B |
| Opposite door | Ⓞ |

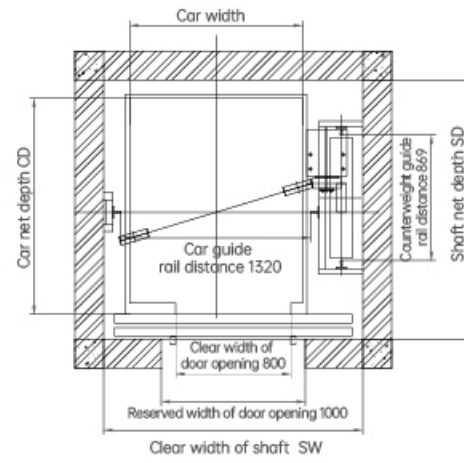
Note: Ⓞ Is an optional function

Villa elevator construction drawing

Elevation of the well



Plan of the well



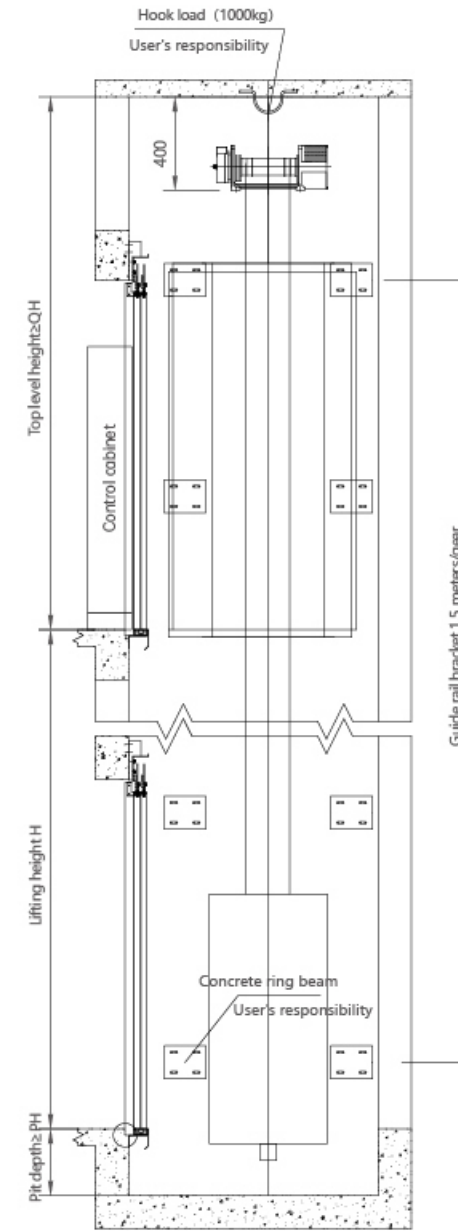
Center-opening

| Rated load capacity | Rated speed | Car size (Width A × Depth B) | Door opening width JJ | Shaft size (Width C × Depth D) | Bottom pit depth PH | Top layer height QH | Motor power |
|---------------------|-------------|------------------------------|-----------------------|--------------------------------|---------------------|---------------------|-------------|
| (kg) | (m/s) | (mm) | (mm) | (mm) | (mm) | (mm) | (kw) |
| 250 | 0.4 | 1000×1100 | 700 | 1600×1400 | 500 | 3000 | 1.0 |
| | 1.0 | | | | | | 2.2 |
| 320 | 0.4 | 1000×1200 | 700 | 1600×1500 | 500 | 3000 | 1.0 |
| | 1.0 | | | | | | 2.2 |
| 400 | 0.4 | 1100×1200 | 750 | 1700×1500 | 500 | 3000 | 1.2 |
| | 1.0 | | | | | | 2.8 |

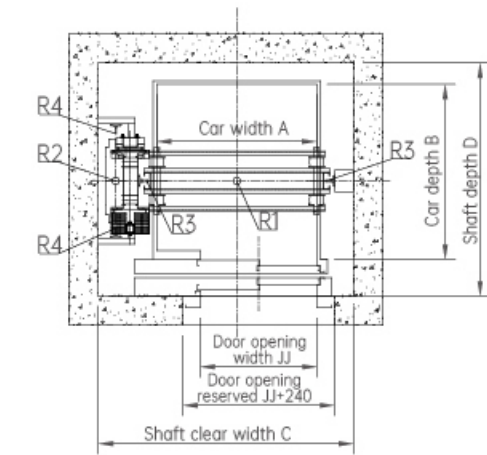
Not: Only for reference, final manufacture please follow contract.

Villa elevator construction drawing

Elevation of the well



Plan of the well



Side-opening

| Rated load capacity | Rated speed | Car size (Width A × Depth B) | Door opening width JJ | Shaft size (Width C × Depth D) | Bottom pit depth PH | Top layer height QH | Motor power |
|---------------------|-------------|------------------------------|-----------------------|--------------------------------|---------------------|---------------------|-------------|
| (kg) | (m/s) | (mm) | (mm) | (mm) | (mm) | (mm) | (kw) |
| 250 | 0.4 | 800×1100 | 700 | 1450×1450 | 500 | 3000 | 1.0 |
| | 1.0 | | | | | | 2.5 |
| 320 | 0.4 | 900×1200 | 800 | 1550×1550 | 500 | 3000 | 1.0 |
| | 1.0 | | | | | | 2.5 |
| 400 | 0.4 | 1100×1200 | 900 | 1750×1550 | 500 | 3000 | 1.2 |
| | 1.0 | | | | | | 3 |

Not: Only for reference, final manufacture please follow contract.